

## Public Housing

Al Ain, United Arab Emirates



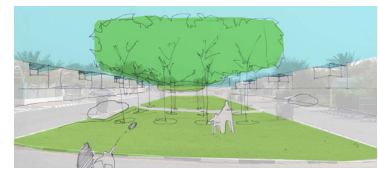
*residential development*

In April 2006, the Committee of Residential Development - Emirate of Abu Dhabi assigned an international design team to provide the necessary consultancy services for the re-development and vitalization of three large-scale residential suburban areas in the outskirts of Al Ain. The program included the conception of a development vision for the wider suburban areas and a future model for sustainable public housing in the region. Aiming at incorporating future projections of population growth and development pressure, 2,500 residential villas were distributed to some 700 hectares of land, for which facilities, such as schools, health care, shops, mosques, etc. needed to be provided in an integrated way.

The urban layout was to contrast the hitherto prevalent rectangular and monotonous pattern, interpreting the surrounding sand dune landscape by the introduction of curved, organic shapes. The bulk of housing units got broken up into small and manageable neighbourhood clusters fostering residents' identification and a sense of space. A green network of parks and pedestrian paths was to link the clusters to the public facilities, connect the development sites within the wider suburb, and encourage non-vehicular movement.



site landscape



green network



context study



urban design layout

client: Dorsch Consult Abu Dhabi for Emirate of Abu Dhabi –  
The Committee of Residential Development  
project area: 700 ha  
planning: 2006