

Headquarters Daimler AG, Moscow

1997-1999

completed; design services, tender, design supervision

Client DaimlerChrysler AG, Sindelfingen

GFA 7.050 m²

Costs 13 mill. €

Moscow Architecture Awards „Best Office Awards“ (Russland) 2000

French Institute Commendation (Frankreich) 2001

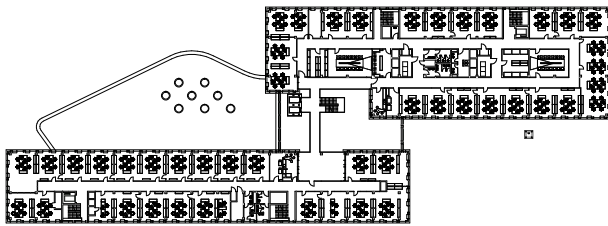


The complete site has been developed as an office-park. It is subdivided into seven building-phases which are linked by a ring road within the property. The first phase is situated in the eastern section of the site close to the main entrance area on the Uliza Boshaya Ordynka. The building consists of two 5-storey wings, identical in length, forming an atrium between them which is covered by a glass roof.

The long elevations have been purposely created with a monolithic expression which is emphasized by the penetration of the window holes and the use of material eg. natural stone, face-brickwork or granite. The atrium roof consists of a light-weight steel construction covered with glass; the transparency of which creates a special atmosphere, also ideal to be used for representation purposes.

The internal column spacing of 7,52m allows for a high degree of flexibility which in turn permits easy subdivision to accommodate different functional rooms. Valuable office areas are grouped along the facades with the combi spaces arranged on the atrium side.





Headquarters Metro AG, Moscow

2004-2007

completed; design services, tender, design supervision

Client	Metro Cash & Carry International GmbH, Duesseldorf
GFA	22.500 m ²
Costs	38 mill. €

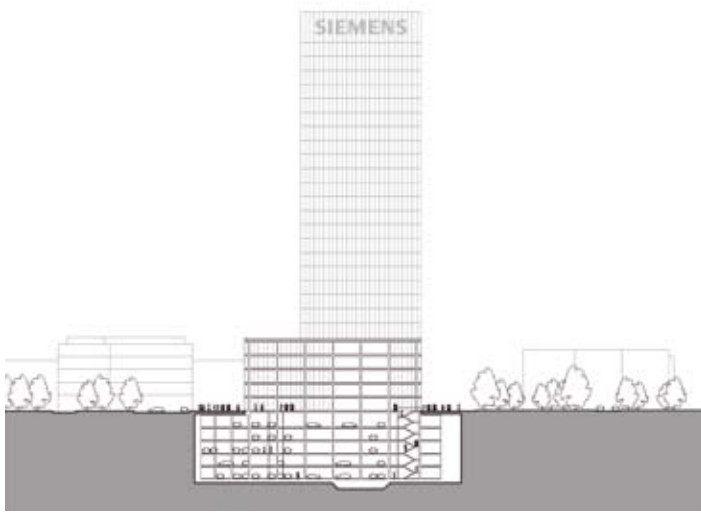


The rapid expansion of the German retail chain "Metro" in Russia called for a central administrative center for the 630 employees in Moscow.

The office-building is situated in the southern part of the property and is divided into two parallel, slightly shifted buildings – one has a two-band type with six stories and the other a three-band with five stories. Both parts are linked by a central Glass Hall. The one-story restaurant is added towards the south. Restaurant, auditorium and showrooms are grouped around the central foyer on the ground floor. With its glass elevators, connecting bridges and representative stairs, the Main Hall acts as a place of communication. The conference rooms and social spaces of the office floors are also linked to the Hall. The office floors have glass partition walls - allowing wide and unobstructed views. In emphasizing the floor slabs, the facades are visually divided horizontally. The full-height facade elements are completely glazed with the exception of a small parapet.







Headquarters Siemens AG and AFK Sistema Gals, Moscow

2006-2011

in cooperation with Alexey Vorontsov, Moscow
under construction; general designer, all services

Client AFK Sistema, Moscow
GFA 110.000 m²
Costs 160 mill. €



The Headquarters for Siemens AG and AFK Sistema Gals, which are currently under construction, are situated in the North-West of Moscow directly at the Leningradsky Prospekt, one of the big radial highways to the inner city, next to the Gorbatschow-Foundation. The high-class office development consists of two 27-story 110 m high towers, each placed in a corner of a five-story podium building. The footprint of each tower measures 35 x 35 m.

The towers contain mainly offices. The "class A"-building will have a gross floor area of approx. 105.000 m² for office use, special uses and parking.

Areas for the 2-story entrance lobbies, cafeteria, VIP restaurant, office services and conference rooms are located around a 19 m high glass covered atrium in the podium building with a view to the close-by public park. The Building-complex will also hold a five-level parking garage with 700 places.



